

# What items should be sent on the Un-boxed (UB) service?



Your items may fit within the dimensions of our standard overnight services, but if items are packed in any of the following ways, they must be sent on the Un-boxed (UB) service.

This is to reduce the risk of damage to your items and the sortation equipment at our hub.

All Un-boxed items are sorted in a specialist hand sort zone.

Please use the following to determine if your item should be sent on the Un-boxed service.

**Is the item packed in a bag, shrink wrap, in plastic or in a sack (material or hessian)?**



**Is your item cylindrical or round in shape and not in a box?**

Tyres are exempt unless they contain the wheel (alloy/carbon/steel).



**Is your item a pole?**



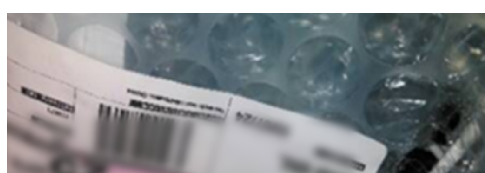
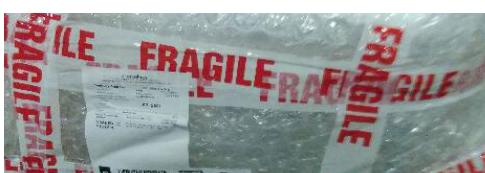
**Does your item have anything protruding from the package (e.g. wheels/handles/parts of the item itself)?**



**Does your item have any strapping when packed?**



**Is your item bubble wrapped without a box protecting the item?**



## Un-boxed

Maximum weight per item 30kg

Maximum items per consignment 4



The longest dimension must not exceed 160cm. The sum of the second and third dimension must not exceed 120cm.

All pick up request (PUR) items must be correctly packaged, otherwise, charging will default to the Un-boxed (UB) service. Any Liquid (LP) or Limited Quantity (LQ) items MUST still be sent on these specialist services.

**For further information, please contact your local depot or visit our website.**  
[apc-overnight.com/sending-a-parcel/packing-advice](http://apc-overnight.com/sending-a-parcel/packing-advice)